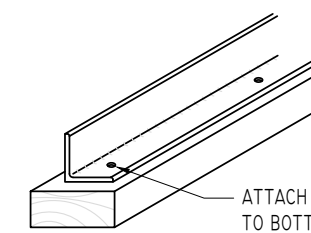


SEATING PLAN

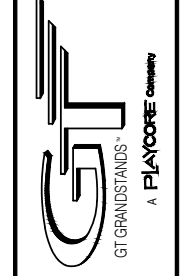
SCALE: 1/4" = 1'-0"
NET SEATS = 228



ATTACH TREATED WOOD SILL TO BOTTOM FRAME RUNNER USING 3/8" x 1-1/4" LAG SCREW WITH FLAT WASHER

MUD SILL ATTACHMENT

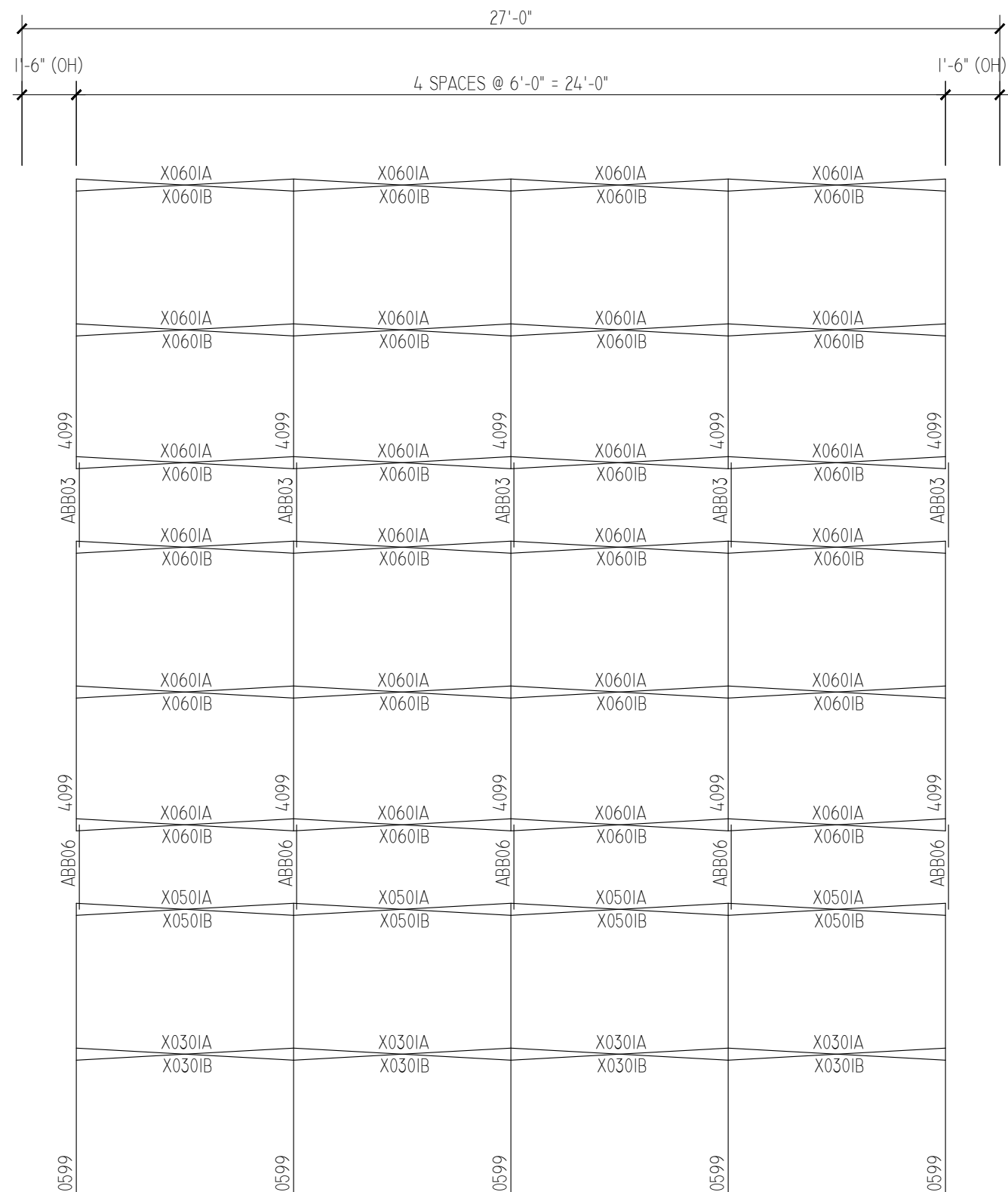
2810 Sydney Road
Plant City, Florida 33566
Phone: 813-305-1415
Fax: 813-305-1419
www.gtgrandstands.com



**SEATING PLAN
15 ROW BLEACHER
WITH AISLE**

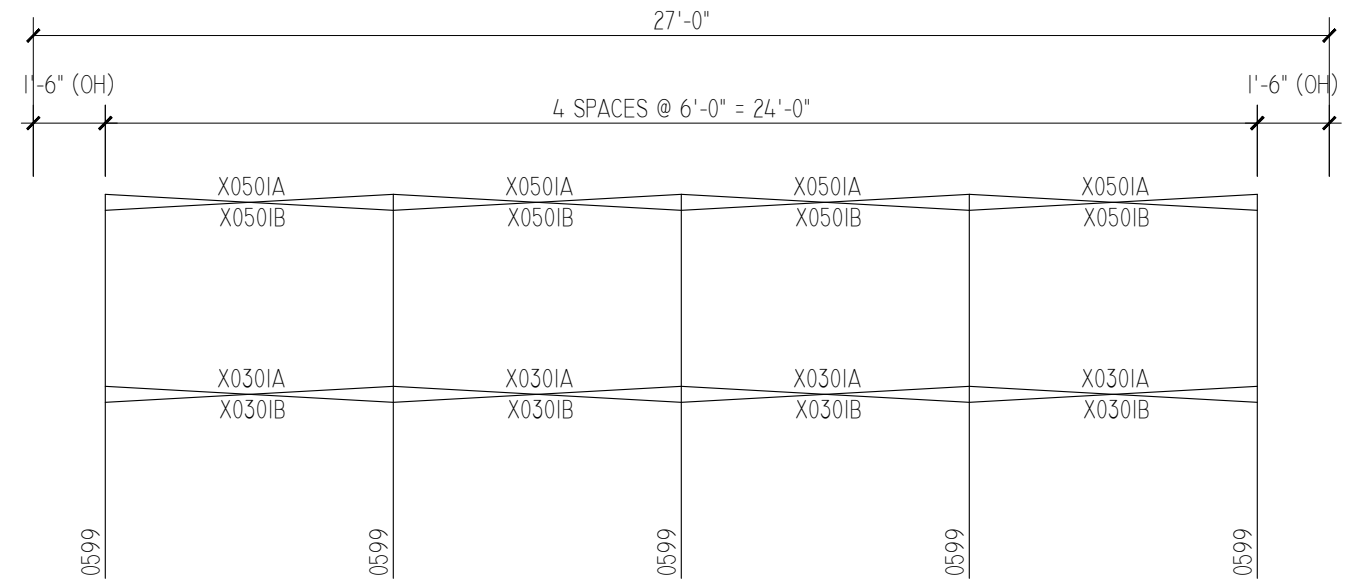
**GS-1527ADC-A AND GS-1527GDC-A
OPTIONAL -MS (MUD SILLS)**

DRAWN BY
CHECKED BY
DATE MAY 2010
SCALE NOTED
JOB NO. GS-1527ADC-A GS-1527GDC-A
DWG NO.



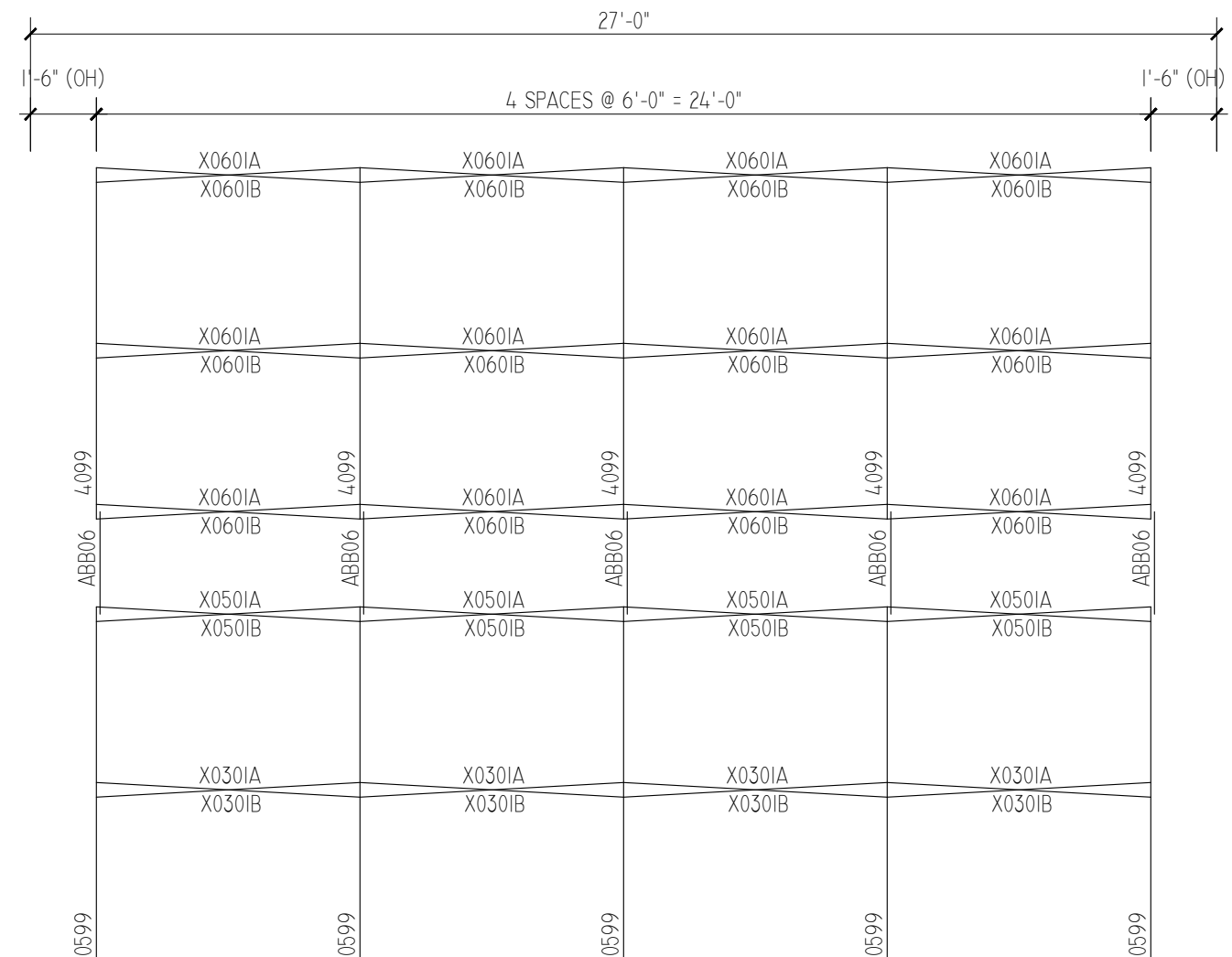
LEVEL 1 FRAMING PLAN

SCALE: $\frac{1}{4}'' = 1'-0''$



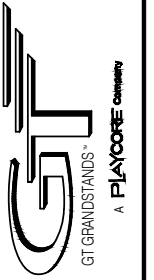
LEVEL 3 FRAMING PLAN

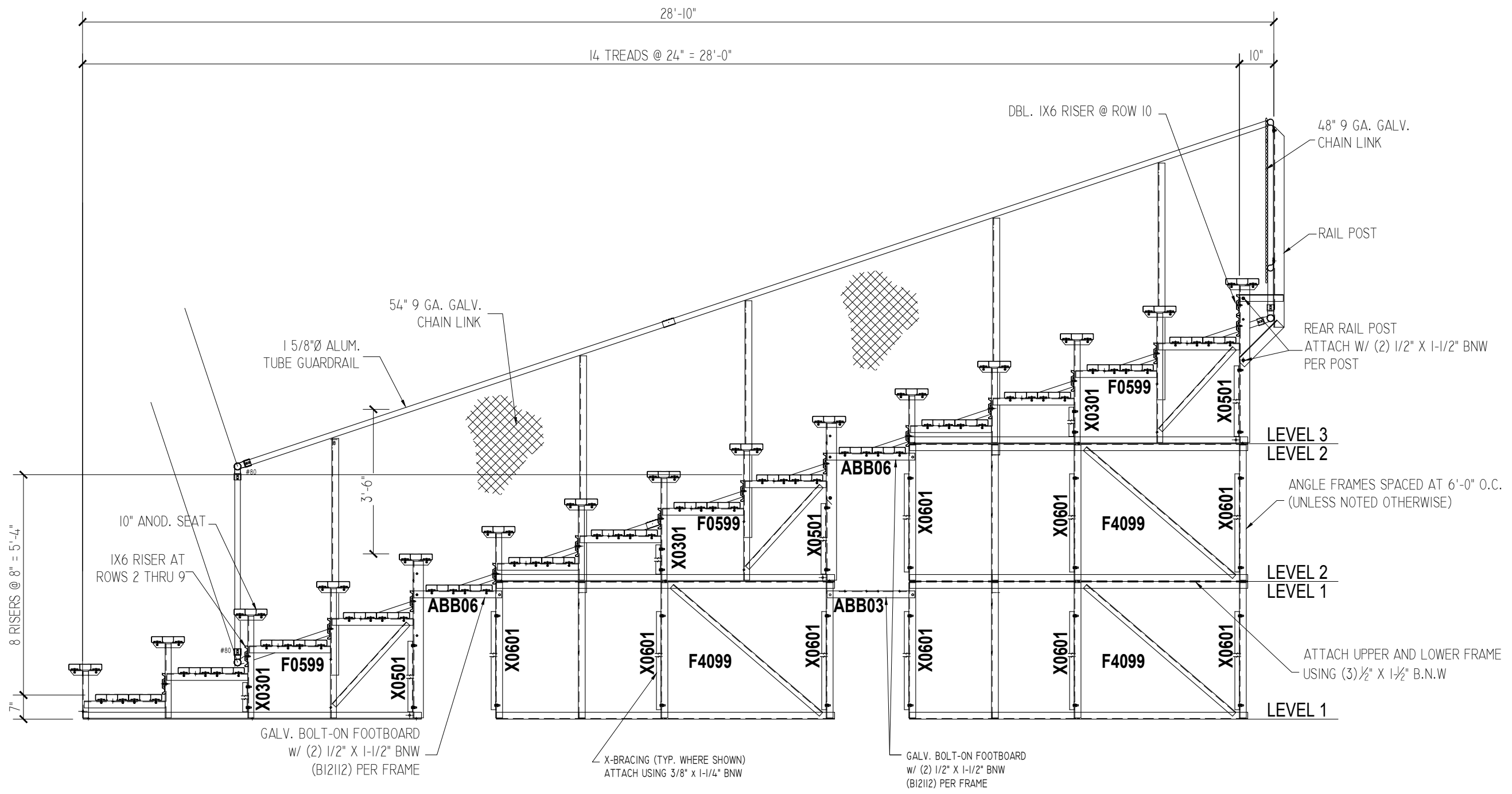
SCALE: $\frac{1}{4}'' = 1'-0''$



LEVEL 2 FRAMING PLAN

SCALE: $\frac{1}{4}'' = 1'-0''$

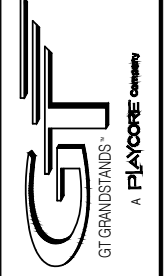




TYPICAL THRU END OF STAND

SCALE: 3/8" = 1'-0"

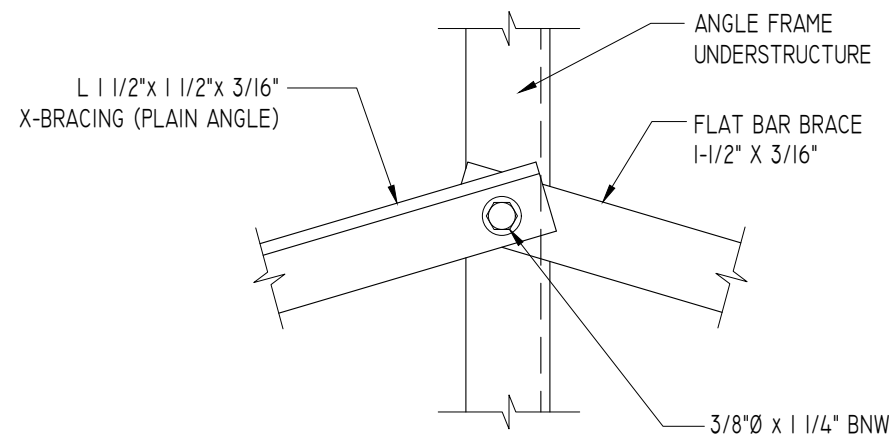
2810 Sydney Road
Plant City, Florida 33566
Phone: 813-305-1415
Fax: 813-305-1419
www.gtgrandstands.com



SECTION THRU
15 ROW BLEACHER
WITH AISLE

GS-15XXADC-A AND GS-15XXGDC-A
OPTIONAL -MS (MUD SILLS)

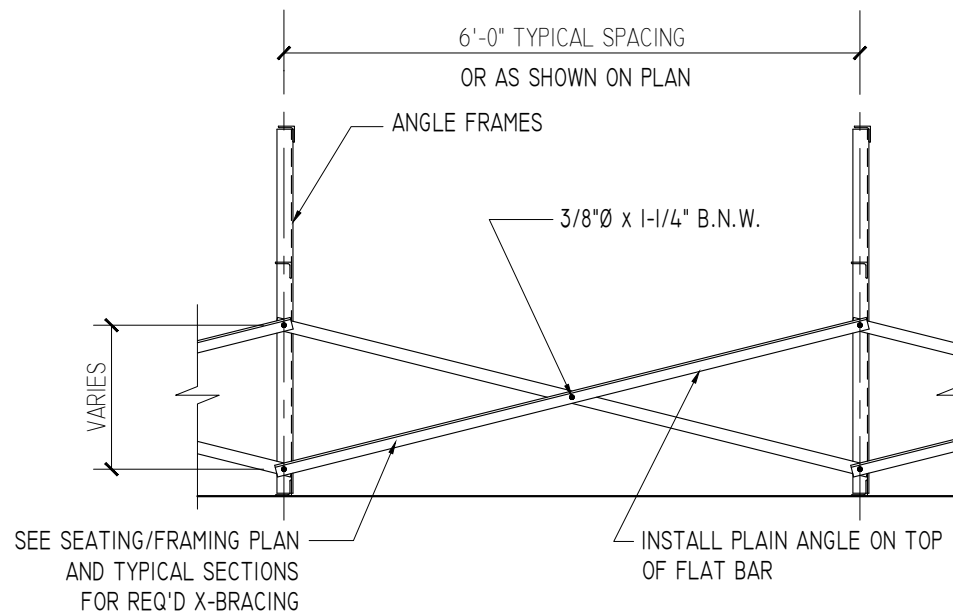
DRAWN BY
CHECKED BY
DATE MAY 2010
SCALE NOTED
JOB NO. GS-15xxADC-A GS-15xxGDC-A
DWG NO.



X-BRACE ASSEMBLY IS MADE UP OF (1) PLAIN ANGLE AND (1) FLAT BAR.

TYPICAL X-BRACE TO FRAME CONN.

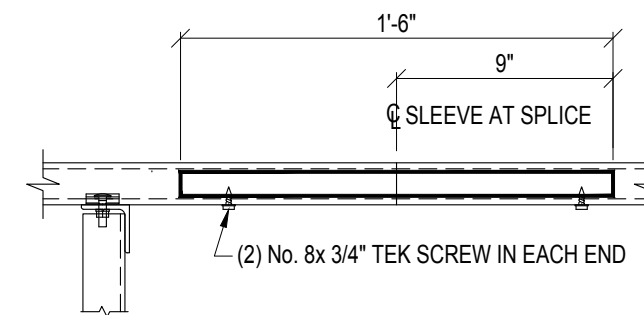
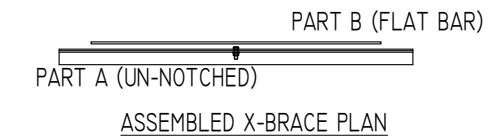
SCALE: 3" = 1'-0"



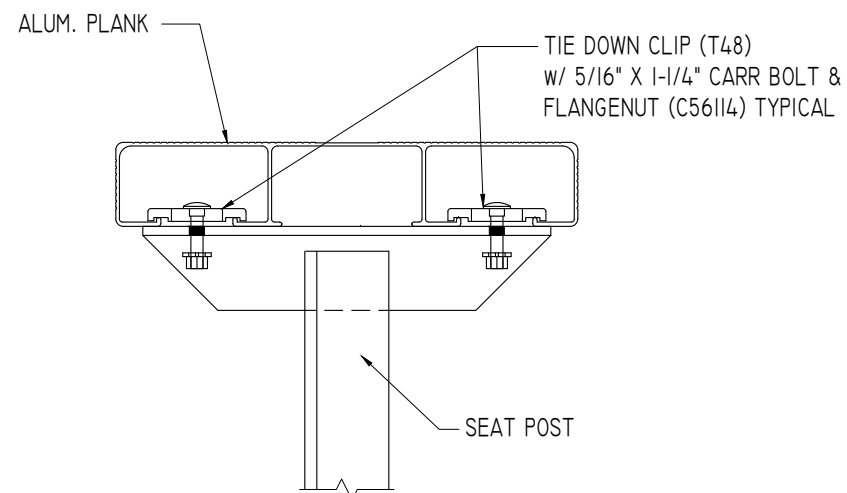
TYPICAL BRACING LAYOUT

SCALE: 1/2" = 1'-0"

PRE-ASSEMBLE X-BRACE SETS. EACH SET CONSISTS OF A 'PART A (PLAIN ANGLE)' AND A 'PART B (FLAT BAR)'. PLACE THE PIECES TOGETHER AT THE FLAT SIDES AND CONNECT USING A 3/8" x 1-1/4" B.N.W.

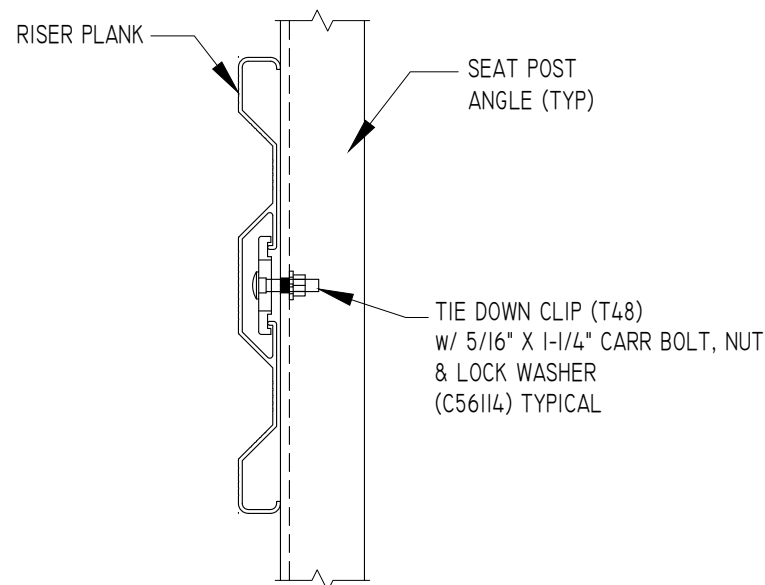


ALUMINUM SLEEVE DETAIL



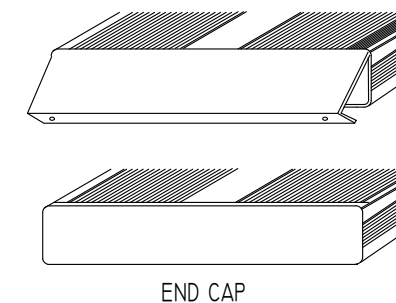
SEAT PLANK INSTALLATION

SCALE: 3" = 1'-0"



TYPICAL RISER INSTALLATION

SCALE: 3" = 1'-0"



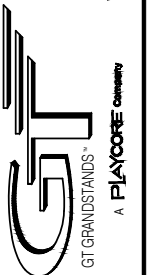
END CAP

1. LOCATE THE CHANNEL END CAP AS SHOWN, WITH THE WIDER FLANGE ON BOTTOM.
2. TAP THE CHANNEL INTO PLACE WITH A RUBBER Mallet OR SOFT WOOD.
3. DRILL (2) No. 8 x 3/4" TEK SCREWS THRU END CAP AND BOTTOM FLANGE OF PLANK
4. ENDCAPS WITH STICKERS ARE TO GO AT ENDS OF SEAT PLANKS, PLAIN ENDCAPS GO ON ALL OTHER BOARDS.

ENDCAP INSTALLATION DETAIL

SCALE: 3" = 1'-0"

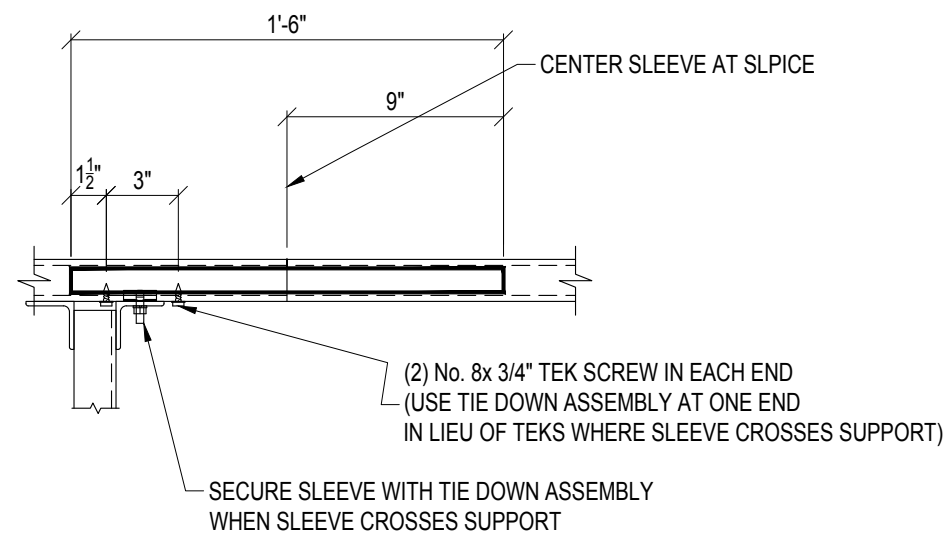
2810 Sydney Road
Plant City, Florida 33566
Phone: 813-305-1415
Fax: 813-305-1419
www.gtgrandstands.com



MISC. DETAILS
15 ROW BLEACHER
WITH AISLE

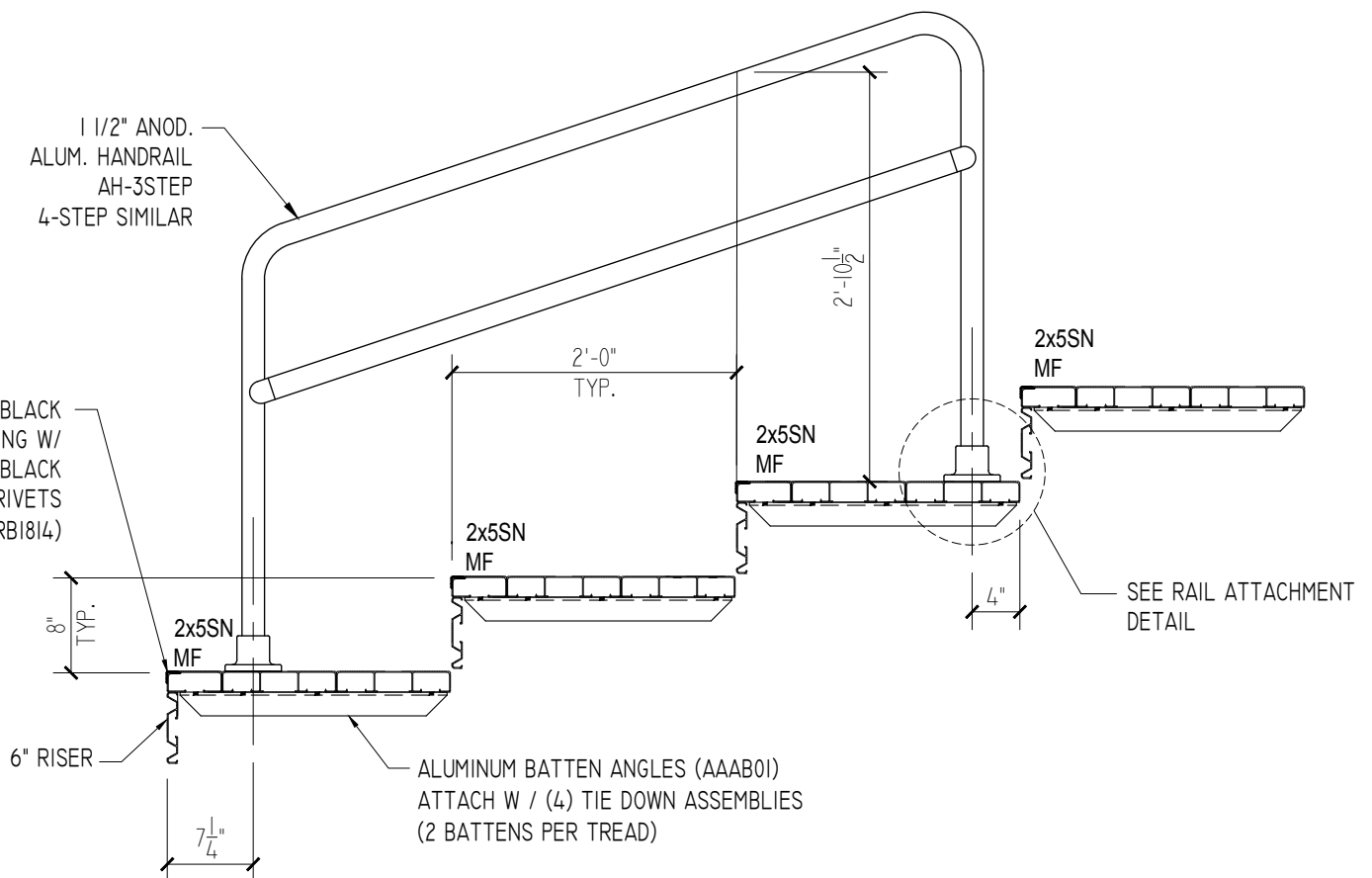
GS-15XXADC-A AND GS-15XXGDC-A
OPTIONAL -MS (MUD SILLS)

DRAWN BY
CHECKED BY
DATE
MAY 2010
SCALE
NOTED
JOB NO.
GS-15XXADC-A
GS-15XXGDC-A
DWG NO.



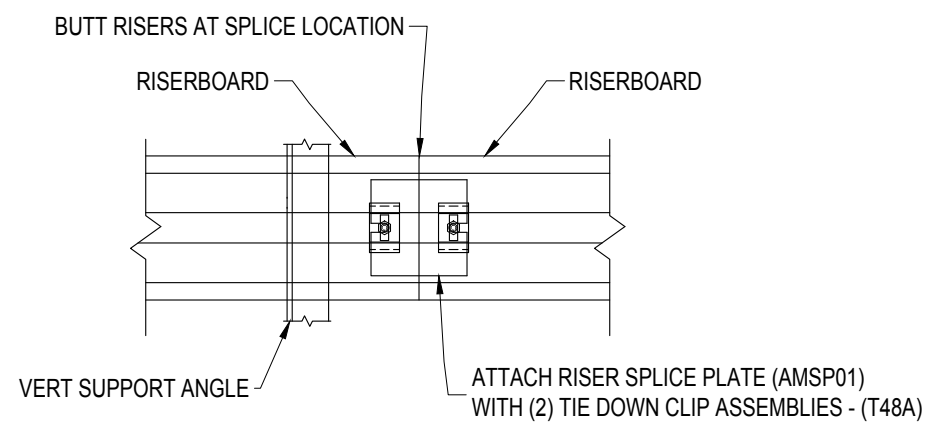
TYPICAL PLANK SLEEVE

SCALE: 1-1/2" = 1'-0"



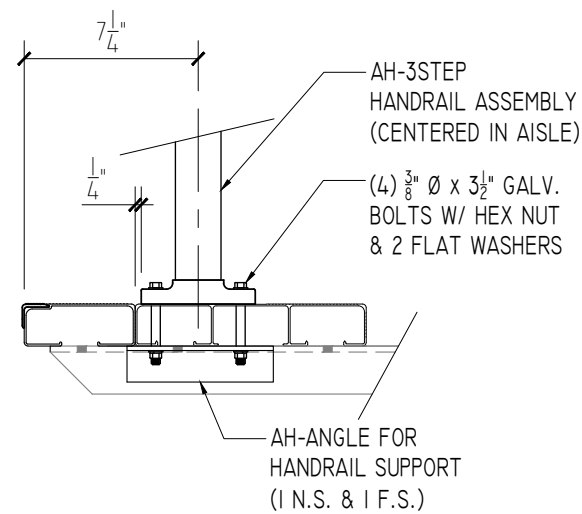
CONDITION AT AISLE

SCALE: 3/4" = 1'-0"



TYPICAL RISER SPLICE

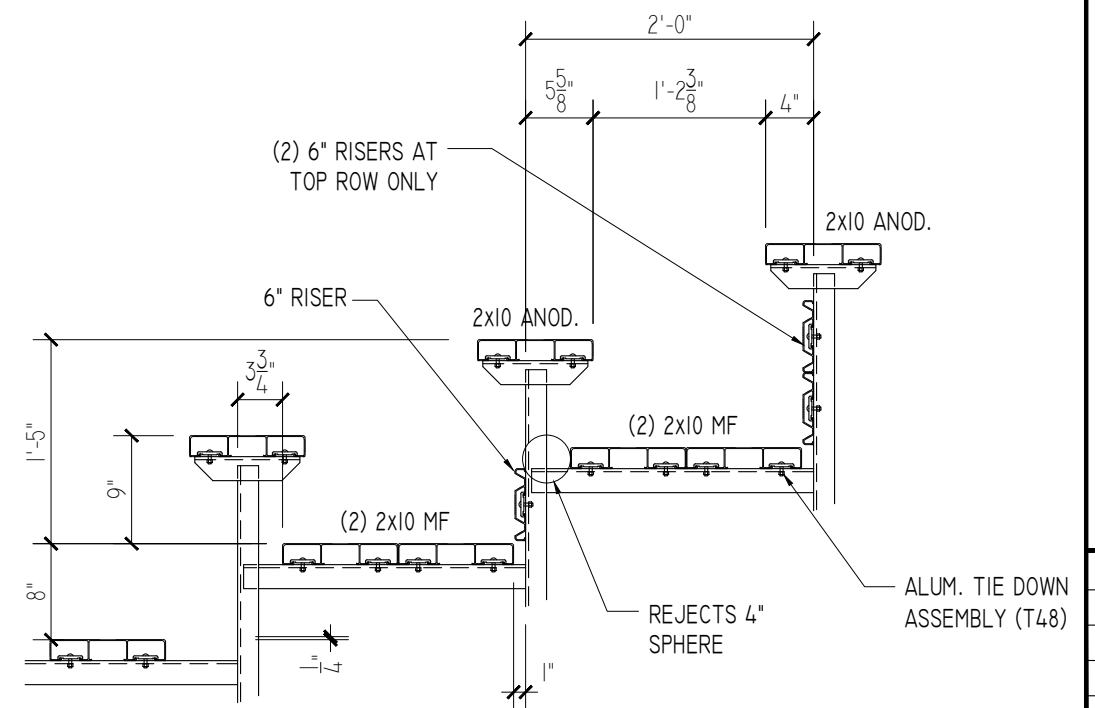
SCALE: 1-1/2" = 1'-0"



HANDRAIL CONNECTION DETAIL

SCALE: 1-1/2" = 1'-0"

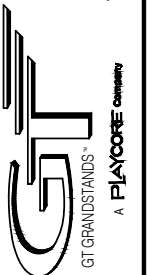
ALIGN EDGE OF FLANGE APPROX. 1/4" FROM THE EDGE OF THE CONTINUOUS 2x10 FOOT PLANK (*ON FRONT APPLICATION DO NOT ALIGN WITH THE 2x5 AISLE STEP PLANK) SLIGHTLY ADJUST FLANGE LOCATION, IF NECESSARY, SO THAT THE BOLT HOLE IS NOT DRILLED INTO A VERTICAL LEG OF THE PLANK. DRILL Ø7/16" HOLES (FOR 3/8" BOLT). ASSEMBLE AS SHOWN IN ABOVE SPECIFIC DETAILS USING GALVANIZED BOLTS, FLAT WASHERS, AND FLANGE NUTS.



CONDITION AT SEATS

SCALE: 3/4" = 1'-0"

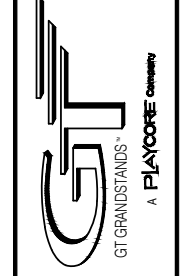
2810 Sydney Road
Plant City, Florida 33566
Phone: 813-305-1415
Fax: 813-305-1419
www.gtgrandstands.com



MISC. DETAILS
15 ROW BLEACHER
WITH AISLE

GS-15XXADC-A AND GS-15XXGDC-A
OPTIONAL -MS (MUD SILLS)

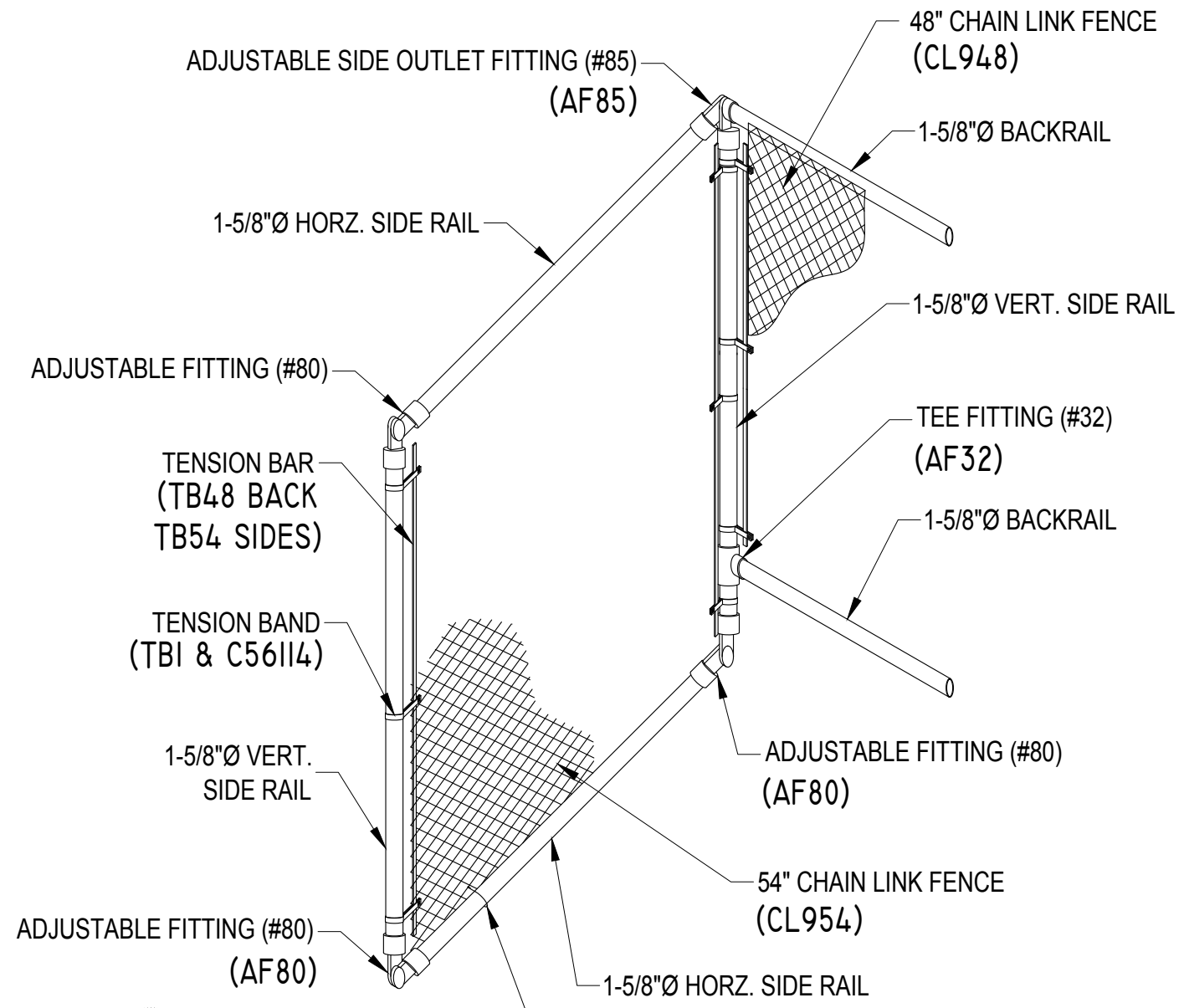
DRAWN BY
CHECKED BY
DATE
MAY 2010
SCALE
NOTED
JOB NO.
GS-15XXADC-A
GS-15XXGDC-A
DWG NO.



CHAINLINK DETAILS
 15 ROW BLEACHER
 WITH AISLE

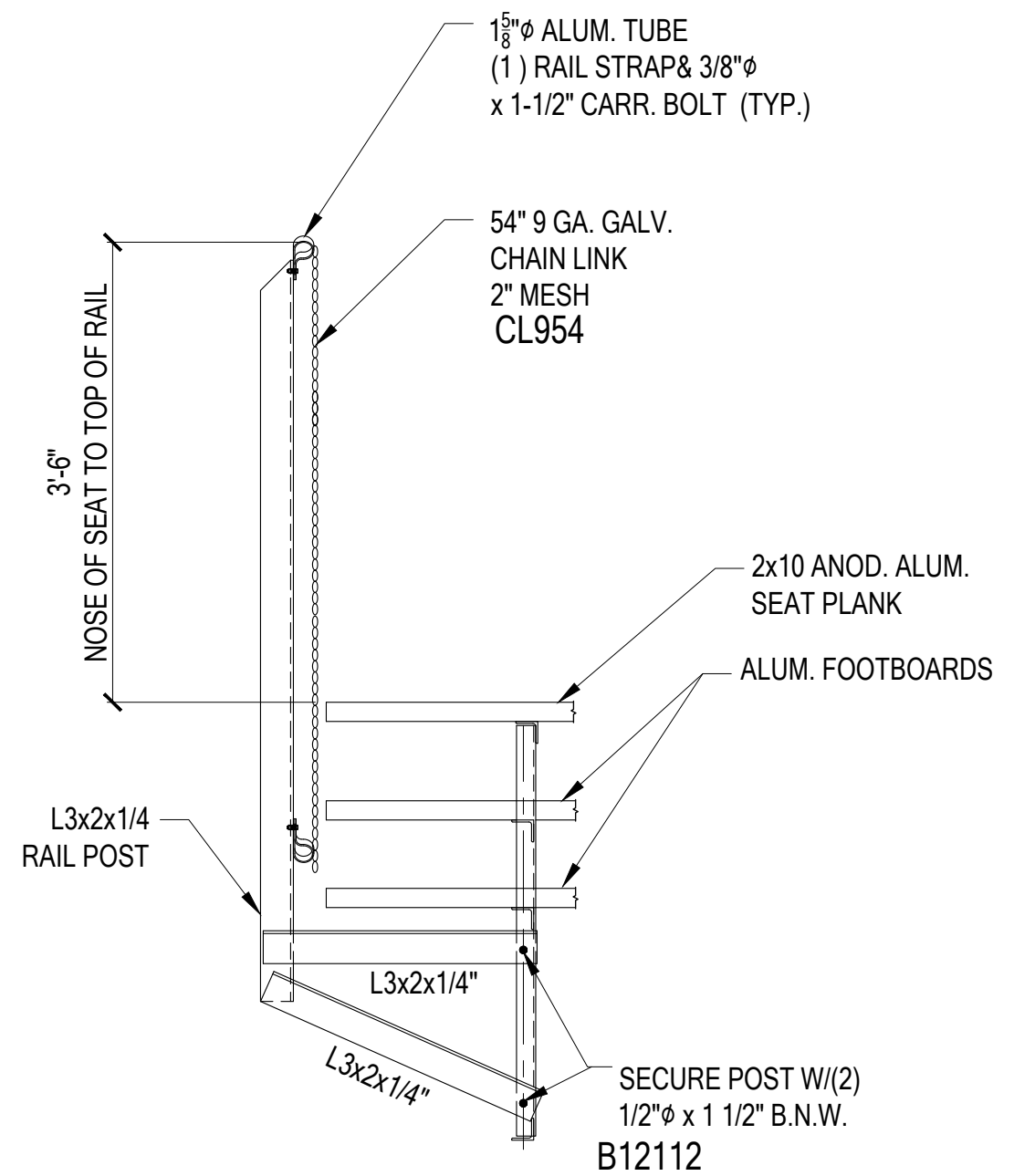
GS-15XXADC-A AND GS-15XXGDC-A
 OPTIONAL -MS (MUD SILLS)

DRAWN BY
 CHECKED BY
 DATE
 MAY 2010
 SCALE
 NOTED
 JOB NO.
 GS-15XXADC-A
 GS-15XXGDC-A
 DWG NO.



CAUTION:
 PARTS "HDSI" (1" WIDE) AND "TB1"
 (3/8" WIDE) ARE SIMILAR - CARE
 SHOULD BE TAKEN TO IDENTIFY
 THESE PARTS CORRECTLY.

ISOMETRIC VIEW
CONNECTION DETAIL OF BACK RAIL TO SIDE RAIL



RAIL POST CONNECTION DETAIL